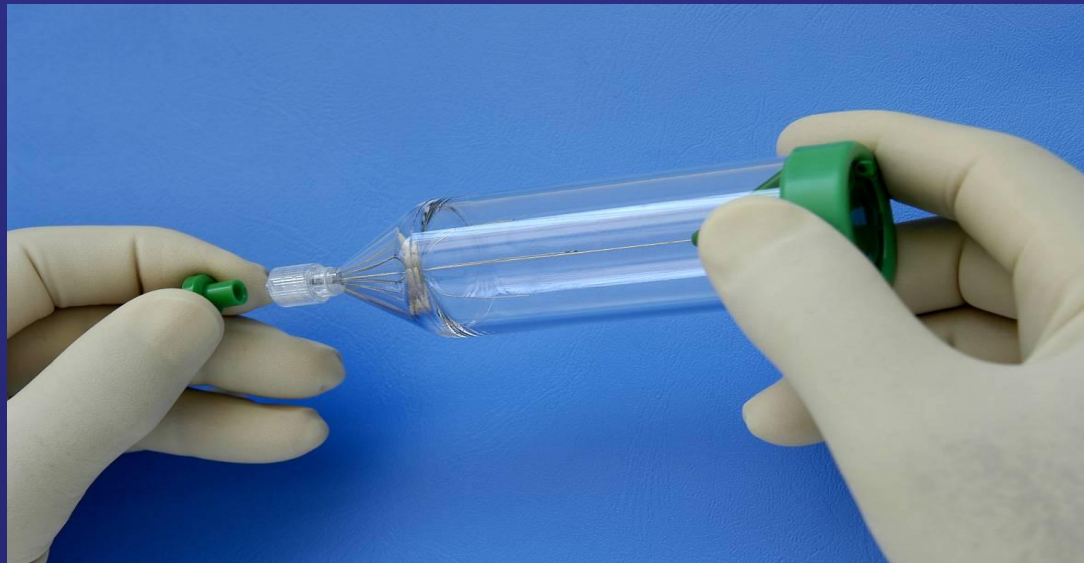
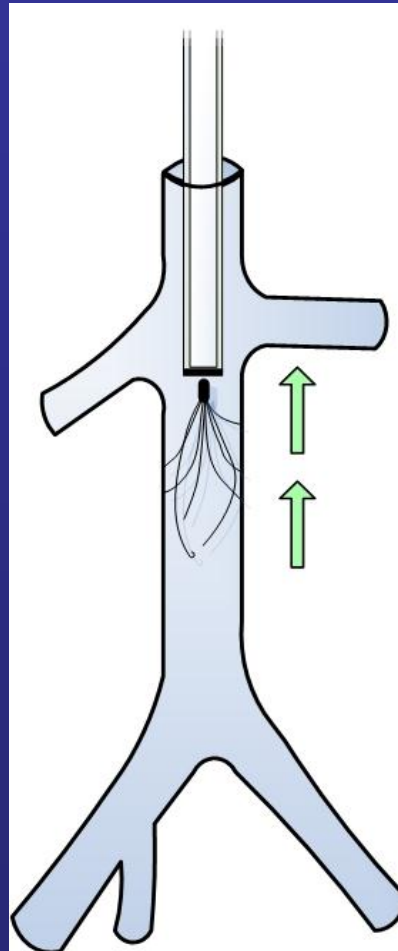
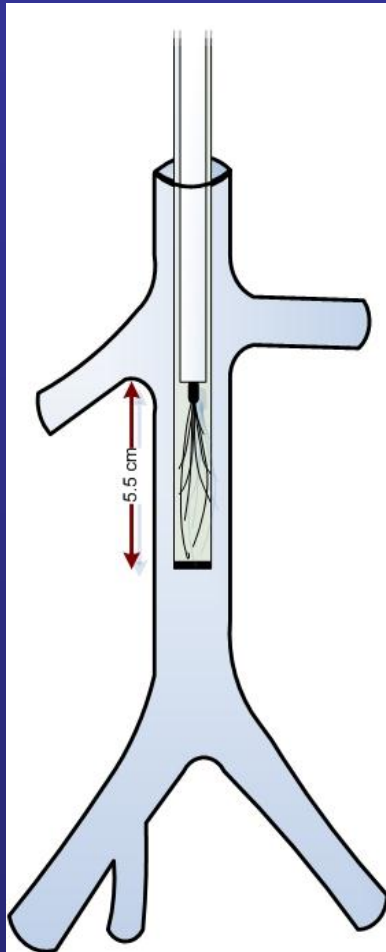




Procedure of Implantation Filter without Hook



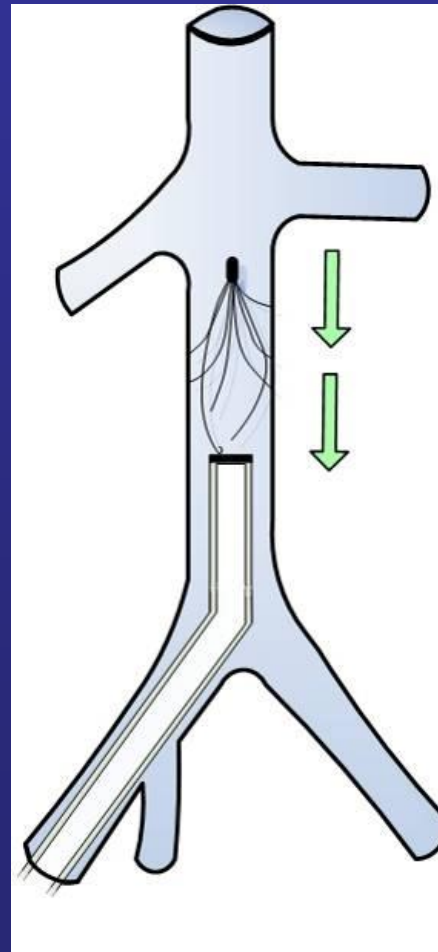
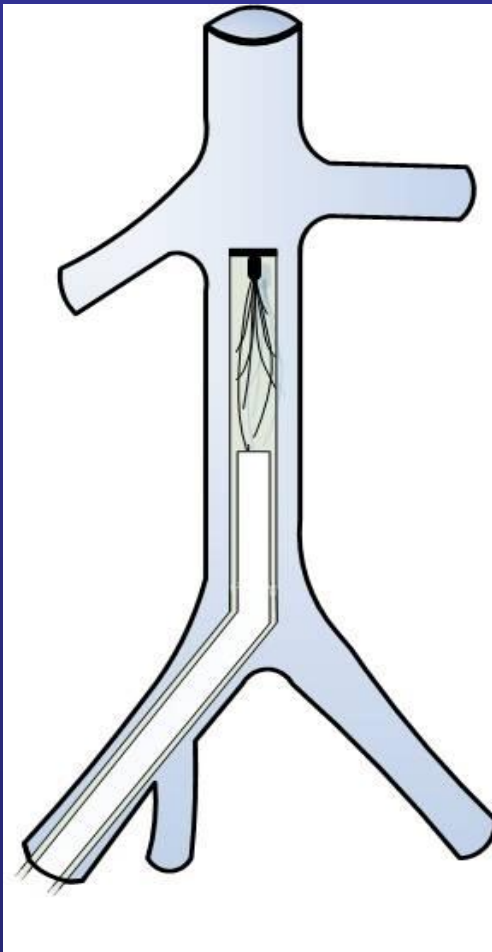
Antigrade Approach



In order to position the head of the filter below the lowest renal vein :

When you do the antigrade approach, the filter is reversed compared to the retrograde approach. Therefore, when you do the antigrade approach, the tip of the marker band must be 5,5cm below the lowest renal vein. Gently release the filter by pulling the introducer catheter upwards along the pusher catheter.

Retrograde Approach



In order to position the head of the filter below the lowest renal vein

When you do the retrograde approach, the filter is reversed compared to the antigrade approach. Therefore, when you do the retrograde approach, the tip of the marker band must be just below the lowest renal vein. Gently release the filter by pulling the introducer sheath upwards along the pusher catheter.

Tips and tricks for implantation

- In order to have the best centering :

UPPER APPROACH

**The strict inclination of the Optional IVC Filter
is more frequently with a femoral
implantation and all the more when exits an
angulation IVC/CIV ***

Tips and tricks for implantation

* HEGP Paris Radiology department Pr. Sapoval Marc

“Work about the evaluation of the implantation way about the lateral inclination of the IVC”

166 ALN implanted – FF 126 + FJ 40

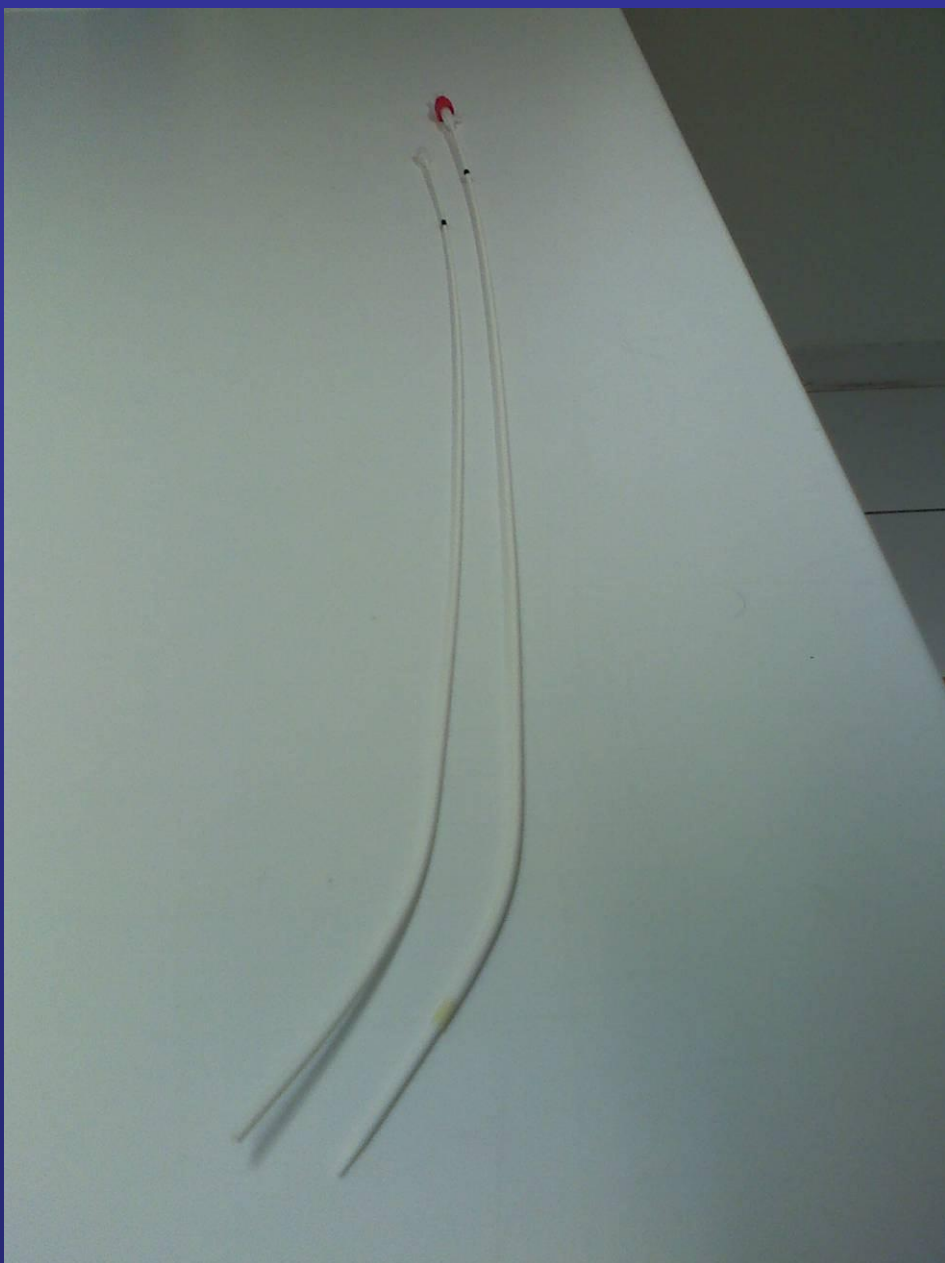
Jug way : No strict inclination

Fem way : 24 strict inclinations but in **19 patients existed a high association between the strict inclinations and the angulation IVC/CIV**

Tips and tricks for implantation

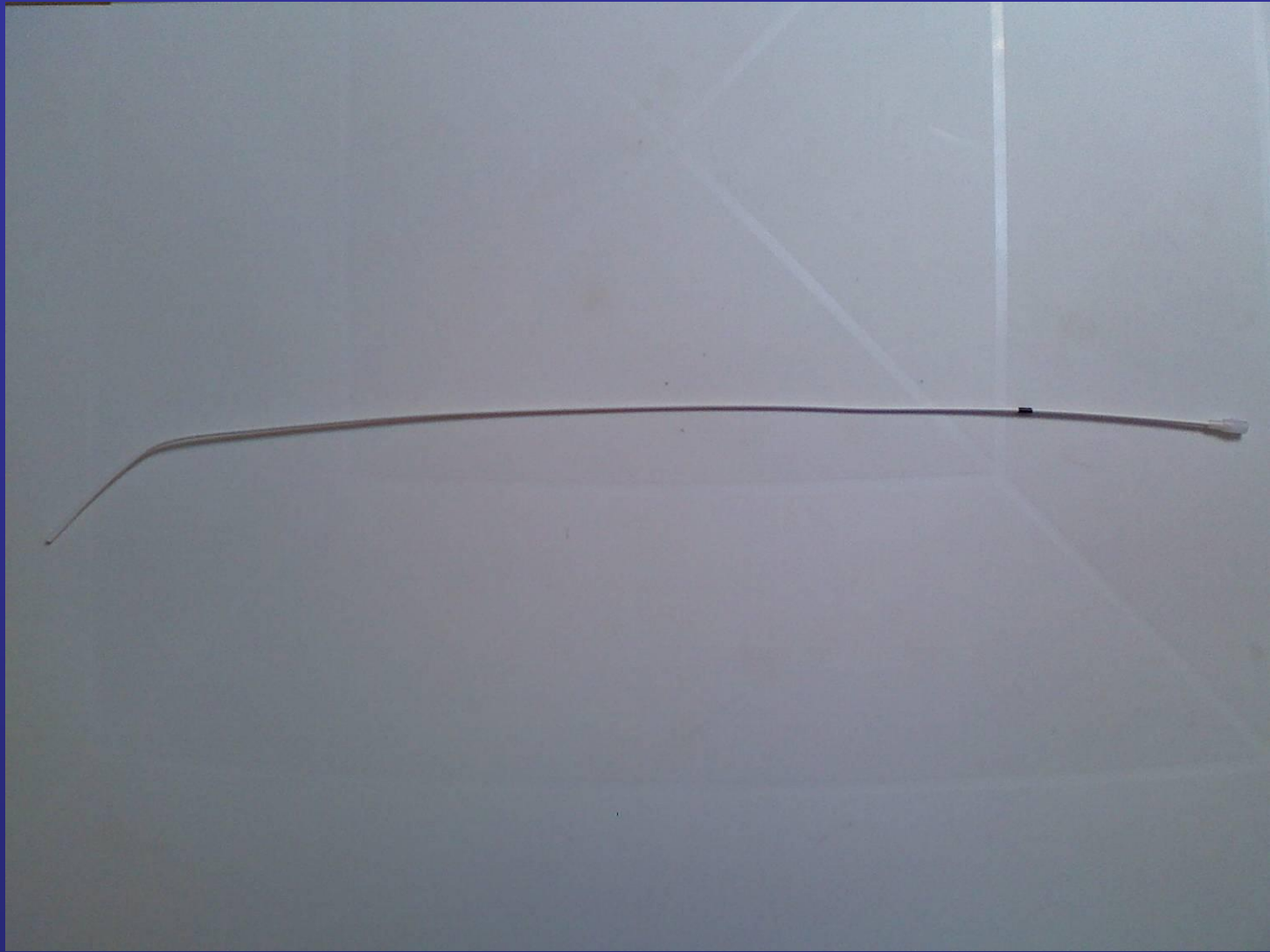
- **Before implantation, possibility to bend the 7 Fr Catheter and the dilator at the same time and together.**

Be careful to well position the catheter before releasing the filter



Tips and tricks for implantation

- **Before implantation, possibility to bend the pusher**
- **Visualize if catheter is sitting against side wall filter will want to tilt! So bend the pusher cath a fair amount-point towards doctor-this will pull the catheter off the wall insuring the filter centers!**



Tips and tricks for implantation

➤ Tilted position or special anatomy of the

I.V.C:

Reduce the tilt with the J guidewire or a pig tail catheter

(should not need if pre-curved pusher, do run)